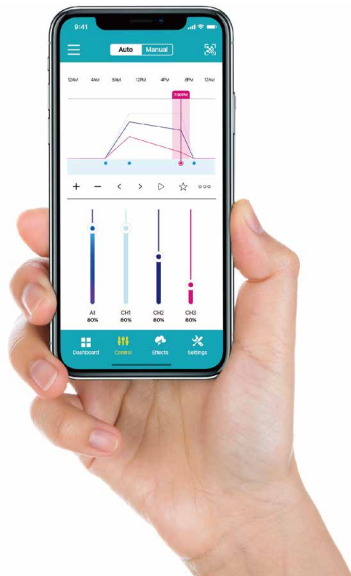




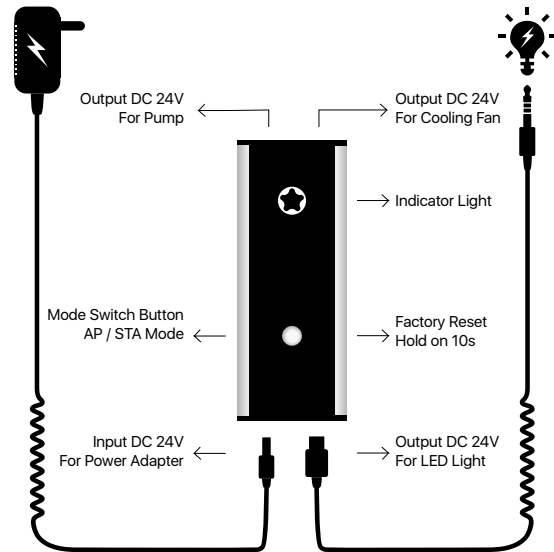
## Wi-Fi Controller User Manual



# ONE RULE ALL



## Wi-Fi Controller Overview





## STA Mode - Controller connect to Home Router (Support Multiple devices connect and control)

## AP Mode - Controller connect to Phone Wi-Fi (Can't use Router's Wi-Fi or Cellular data temporarily)






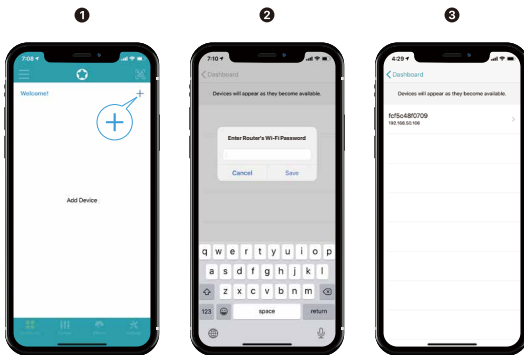
### Download APP

Compatible with iOS and Android.

Search "MicMol" from Apple Store and Google Play to download directly.

### Indicator Light Information

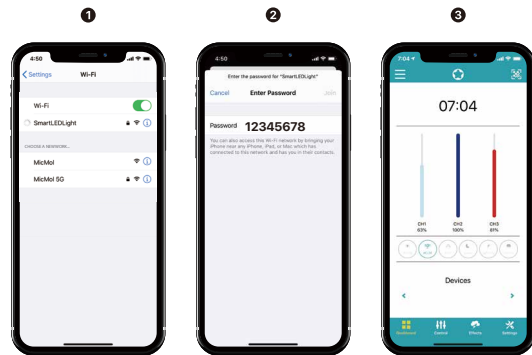
 <b>White</b> (STA Mode)	<b>Quick Flash:</b> Disconnected with router, search and connect to Router.
	<b>Slow Flash:</b> Disconnected with Phone, waiting for Phone to connect.
	<b>Constant Light:</b> Controller connected with Phone.
 <b>Green</b> (AP Mode)	<b>Quick Flash:</b> Waiting for Phone to search and connect.
	<b>Slow Flash:</b> Disconnected, wait for Phone to search and connect.
	<b>Constant Light:</b> Controller connected with Phone.
	<b>Switch to AP/ STA Mode:</b> Press button 2 times to switch.
	<b>Factory Reset:</b> Hold on 10 seconds.



1 Connect power to Controller  
Open MicMol App to Add Device

2 Enter your Router's Password  
**(Home Router)**

3 Wait 1 min for search device  
Until device appear  
Select to connect



1 Plug power to Controller  
Settings>Wi-Fi  
Search SmartLEDLight  
Select to connect

2 Enter the Password  
**"12345678"**  
Connect to Controller

3 Open the MicMol App  
Go Dashboard to control



Video Tutorials



MicMol



YouTube



© 2012~2020 MicMol Limited. All rights reserved.

For more information, please visit [www.micmol.com/app.html](http://www.micmol.com/app.html).