

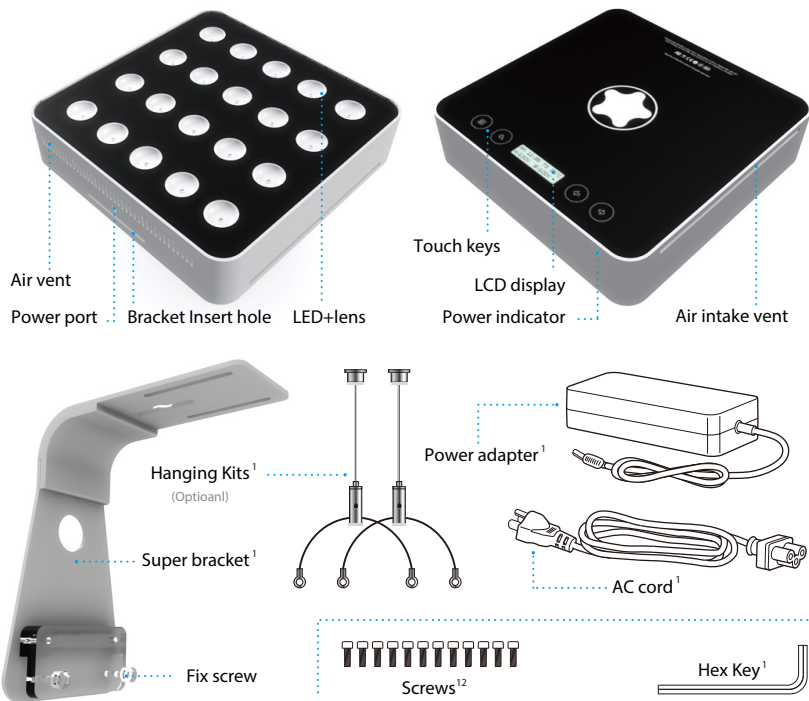


# Hello.

## Quick Start Guide

Welcome to your Aqua Pro.

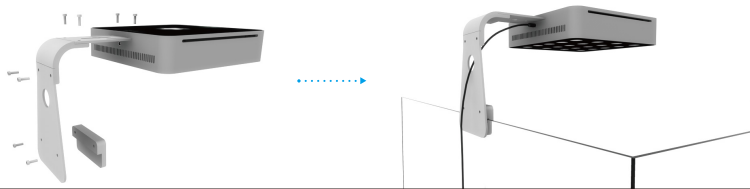
# Overview what's in the box



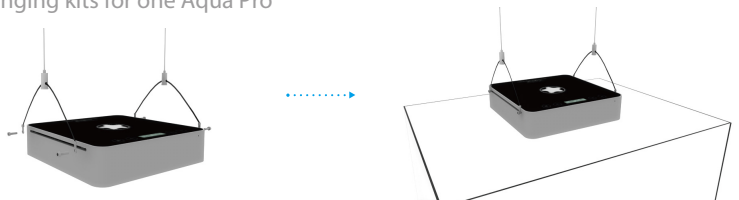
# Getting Started

Congratulations on purchasing your Aqua Pro. Read this guide to get started.

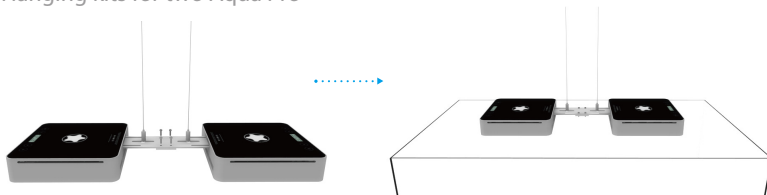
## 1 Bracket



## 2 Hanging kits for one Aqua Pro

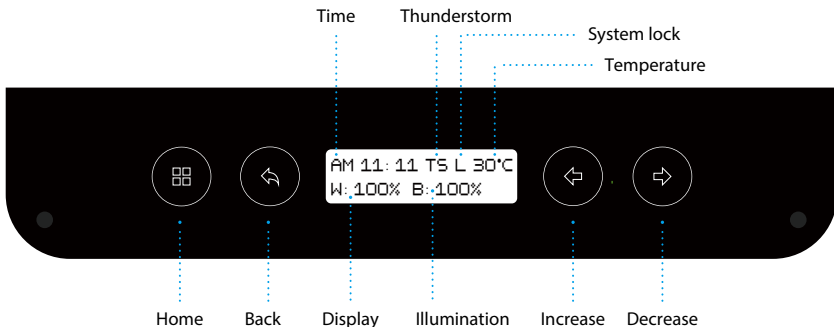


## 3 Hanging kits for two Aqua Pro



# Program Settings

---



**Home / Menu / Confirm** - Browse menu.

---



**Back** - Back to previous menu.

---



**Decrease** - Adjust the value.  
**Special function** : Enter to menu.

---



**Increase** - Adjust the value.  
**Special function** : Hold on 3 second to lock / unlock system.

For more information, please visit [www.micmol.com/programsettings.html](http://www.micmol.com/programsettings.html).

---

# Information

**WARNING:** Never push objects of any kind into this product through the ventilation openings in the case. Doing so may be dangerous and damage your light.

## Important Handling Information

**NOTICE:** Failure to follow these handling instructions could result in damage to your Aqua Pro or other property.

Carrying your Aqua Pro Before you move your Aqua Pro, shut it down and disconnect all cables and cords connected to it.

Using power cord Never force a connector into a port. Don't put the power cord into your tank when it connected.

When you Setup your Aqua Pro please make sure that there are no loose items (such as paper, metal or other) that could accidentally get inside the Aqua Pro through vent openings or get stuck inside a port.

Storing your Aqua Pro If you are going to store your Aqua Pro for an extended period of time, keep it in a cool location (ideally, 71° F or 22° C).

When cleaning the outside of your Aqua Pro, first shut down your Aqua Pro and unplug the power cord. Then use a damp, soft, lint-free cloth to clean the lamp exterior. Avoid getting moisture in any openings. Do not spray liquid directly on the lamp. Do not use aerosol sprays, solvents, or abrasives that might damage the finish.

## MicMol and the Environment

MicMol. recognizes its responsibility to minimize the environmental impact of its operations and products.



| Items                    | Value                          |
|--------------------------|--------------------------------|
| Maximum continuous power | 60W                            |
| LEDs                     | CREE LEDs                      |
| Line voltage             | 100-240V AC                    |
| Frequency                | 50Hz to 60Hz, single phase     |
| Operating temperature    | 50° to 113° F (10° to 45° C)   |
| Storage temperature      | -40° to 140° F (-40° to 60° C) |
| Relative humidity        | 5% to 95% noncondensing        |
| Size                     | 7.8"x7.8"x1.8" (20x20x4.8cm)   |
| Weight                   | 6.8 pounds (2.8kg)             |
| Application              | 30~60 Gallons (standard tanks) |

[www.micmol.com/aquapro.html](http://www.micmol.com/aquapro.html)  
[www.micmol.com/support/faq.html](http://www.micmol.com/support/faq.html)

© 2014 MicMol Limited. All rights reserved.

MicMol , the MicMol logo, Aqua mini, Aqua Pro are trademarks of MicMol registered.  
M002-0820-A Printed in China